

IPDACT-Configurator Application (V5.0)

Quick User's Guide

IPDACT Dm 378-lv3

1. Installation Requirements

1.1. PC

- Pentium III processor or higher.
- Minimum RAM memory: 128 Mbytes.
- Operating system: Windows XP™, Windows 2000™.
- Free hard disk space: 30 Mbytes.
- Minimum screen resolution: 800x600, 256 colors.
- Ethernet 10/100BT network card.

1.2. IPDACT, IPDACT-2 or IPDACT-2UD

- The IPDACT-Configurator application is compatible with:
IPDACT versions 4 and 5 or above.
IPDACT-2 version 5 or above.
IPDACT-2UD version 5 or above.

The version can be identified through the sticker as shown in the following figure:

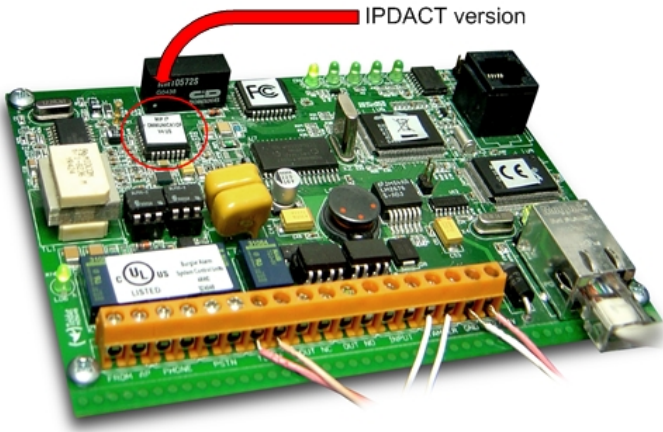


Fig. 1

2. Executing IPDACT-Configurator

The main screen (see Fig. 2) appears on executing the application. In this screen you can select among the options:

- **Quick Install:**
You must select this option to configure the parameters needed to register the IPDACT in a VisorALARM receiver.
- **Local Parameters:**
This lets you to modify local parameters that do not affect the communication with VisorALARM.
- **Device Status:**
Use this option to display the IPDACT status so problems can be diagnosed.

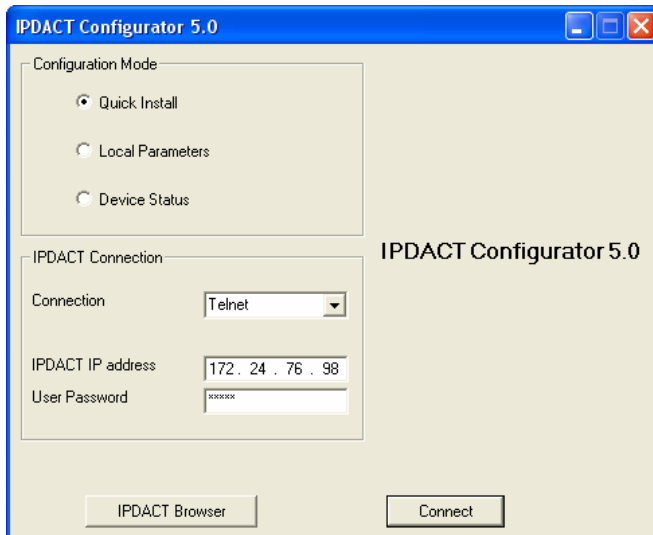


Fig. 2

3. Installing the IPDACT using a crossover Ethernet cable

If you have directly connected the IPDACT with the PC using a crossover Ethernet cable (without using any hub or switch) you will need to use the “Delayed auto-register” feature of IPDACT in order to install the device.

Follow the next steps in order to carry out the IPDACT installation:

STEP 1

Select “Quick Install” in the “Configuration Mode” group and “Telnet” in the “Connection” box from the main screen.

STEP 2

Before connecting with the IPDACT, you need IP connectivity between the PC and IPDACT (the configuration steps for the PC IP address are described in the IPDACT-Configurator Installation Guide).

For this purpose if the IPDACT has the factory settings you must configure the PC with an IP address from the 192.168.0.X network (for example use 192.168.0.254). If the IPDACT has another IP address you need to know that address and the password in order to connect to the device.

STEP 3

Enter the IP address (192.168.0.100 or another known address) and the password in the appropriate fields on the main screen and click on the “Connect” button to establish connection with the IPDACT.

STEP 3

If the connection is successful, the “Quick Install” configuration screen appears. Contrariwise, an error message appears indicating the problem. Two situations could arise:

- The IPDACT IP address is incorrect or the IPDACT release is not compatible with the application.

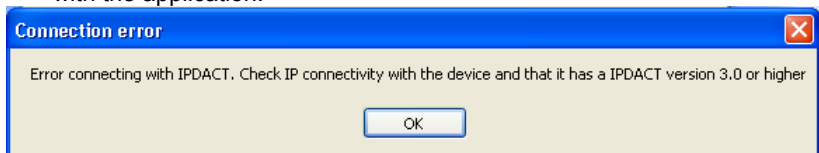


Fig. 3

- The user password is invalid:

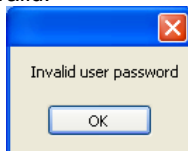


Fig. 4

STEP 4

If the LAN (Local Area Network) where the IPDACT is going to be connected has a DHCP server you must fill in the next parameters in the “Quick Install” screen (see Fig. 5):

- Check the **Enable DHCP client** box: This configures the device to use DHCP to get an IP address and gateway from a DHCP server in the LAN.
- **Account Number**: This is the IPDACT account number that identifies the subscriber and can be up to 8 digits long.
- **Main VisorALARM IP address** and **Backup VisorALARM IP address**: IP addresses for the main and backup VisorALARM receivers.
- **UDP Port**: the receivers’ UDP port where the IPDACT sends alarms and supervision messages.
- **Auto-register password**: This is the registration password that the IPDACT will use to connect to the VisorALARM and to obtain its configuration settings.

The screenshot shows a window titled "Quick Install" with a blue title bar and standard Windows window controls. The main area is titled "Quick Install Parameters" and contains several configuration fields. A legend at the bottom left indicates that red text and fields are "Data provided by your central station" and green text and fields are "Data to be obtained at the installation site".

Parameter	Value	Source
Enable DHCP Client	<input checked="" type="checkbox"/>	Central Station
IPDACT IP Address	172 . 24 . 76 . 98	Installation Site
IPDACT Mask	255 . 255 . 0 . 0	Installation Site
IPDACT Gateway	172 . 24 . 0 . 98	Installation Site
Account Number (0-FFFFFFF)	5656	Central Station
Main VisorALARM IP Address	172 . 24 . 77 . 55	Installation Site
Backup VisorALARM IP Address	172 . 24 . 77 . 54	Installation Site
UDP Port (1-65535)	1222	Installation Site
AutoRegister Password	1111	Installation Site

At the bottom of the window, the IPDACT s/n is 0563/33333 and the Firmware version is 5.3 US. There are "Back" and "Configure" buttons at the bottom right.

Fig. 5

Go to STEP 6.

STEP 5

If the LAN does not have a DHCP server you must fill in the next parameters:

- Uncheck the **Enable DHCP client** box: This configures the device to use a static IP address and gateway.
- **IPDACT IP Address**: A static IP address for the device.
- **IPDACT Mask**: IP subset mask the IPDACT pertains to.
- **IPDACT Gateway**: This parameter is the IP address for the router accessing Internet.
- **Account Number**: This is the IPDACT account number that identifies the subscriber and can be up to 8 digits long.
- **Main VisorALARM IP address** and **Backup VisorALARM IP address**: IP addresses for the main and backup VisorALARM receivers.
- **UDP Port**: the receivers' UDP port where the IPDACT sends alarms and supervision messages.
- **Auto-register password**: This is the registration password that the IPDACT will use to connect to the VisorALARM and to obtain its configuration settings.

STEP 6

Click on the 'Configure' button. This sends and saves the above parameter values in the IPDACT and restarts the device.

From this moment the IPDACT starts trying to connect to the VisorALARM to complete registration and starts operating.

While the IPDACT is in the auto-registering process LED A remains flashing in green. When the registration is completed, LED A stops flashing and LED E lights up in green.

4. Installing the IPDACT when it is connected to a hub or switch on the LAN

When the IPDACT and the PC are connected to the Local Area Network where the IPDACT is going to operate, you do not need to use the IPDACT “Delayed auto-register” feature and you can perform the registration online.

Follow the next steps in order to carry out the IPDACT installation:

STEP 1

Select “Quick Install” in the “Configuration Mode” group and “Telnet” in the “Connection” box from the main screen.

STEP 2

If the LAN has a DHCP server you must configure the PC to automatically obtain an IP address from the DHCP server (the configuration steps for the PC IP address are described in the IPDACT-Configurator Installation Guide).

If the LAN does not have a DHCP server go to STEP 6.

STEP 3

Click on the “IPDACT Browser” button. The IP Configurator Tool will scan for the IPDACT¹ devices connected to the same LAN as the PC. When the scan has finished it will display a screen displaying the discovered devices.

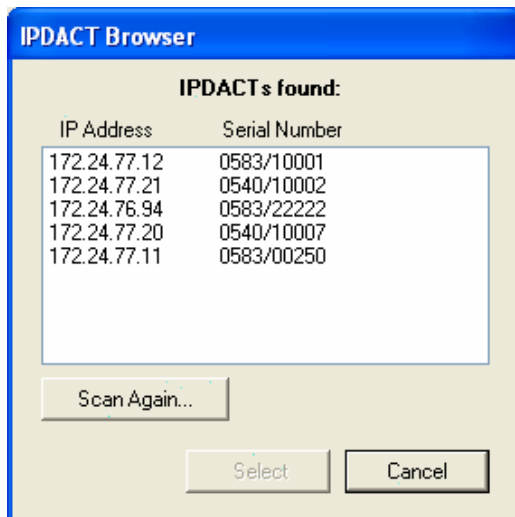


Fig. 6

If the IPDACT Configurator Tool discovers only one IPDACT then it is automatically selected and its IP address put in the “IPDACT Connection” box.

¹ IPDACT scanning is available for IPDACT and IPDACT-UD v5 devices or above.
Dm378-lv3

If there is more than one device in the LAN you must locate the device through its Serial Number. The Serial Number appears on a sticker attached to the terminal strip of the device (see Fig. 7)

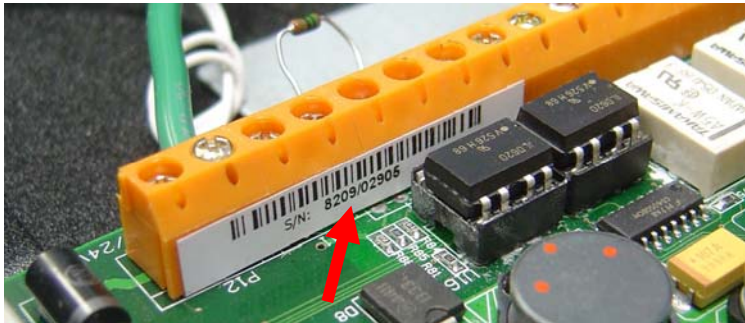


Fig. 7

Then select the IPDACT from the list and click on the “Select” button. The selected device’s IP address will be put in the “IPDACT connection” box.

STEP 4

If the IPDACT password is the factory default password (24680) you can click on the “Connect” button to connect with the device. In any other case, enter the device password in the “User Password” box and click on “Connect”.

If the connection is successful, the “Quick Install” screen appears. Contrariwise, an error message appears indicating the problem. Two situations could arise:

- The IPDACT IP address is incorrect or the IPDACT release is not compatible with the application.

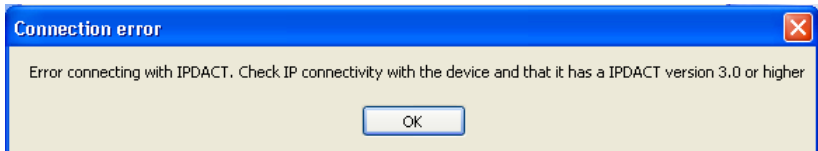


Fig. 8

- The user password is invalid:

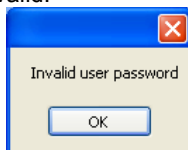


Fig. 9

STEP 5

Fill in the next parameters in the “Quick Install” screen (see Fig. 5):

- Check the **Enable DHCP client** box: This configures the device to use DHCP to get an IP address and gateway from a DHCP server in the LAN.
- **Account Number**: This is the IPDACT account number that identifies the subscriber and can be up to 8 digits long.
- **Main VisorALARM IP address** and **Backup VisorALARM IP address**: IP addresses for the main and backup VisorALARM receivers.
- **UDP Port**: the receivers’ UDP port where the IPDACT sends alarms and supervision messages.

Go to STEP 9

STEP 6

Configure a static IP address for the PC (the configuration steps for the PC IP address are described in the IPDACT-Configurator Installation Guide).

If the IPDACT has the factory settings you must configure the PC with an IP address from the 192.168.0.X network (for example use 192.168.0.254). If the IPDACT has another IP address you need to know that address and the password in order to connect to the device.

STEP 7

Enter the IP address (192.168.0.100 or another known address) and the password in the appropriate fields on the main screen and click on the “Connect” button to establish connection with the IPDACT.

If the connection is successful, the “Quick Install” screen appears. Contrariwise, an error message appears indicating the problem as described in STEP 4.

STEP 8

In the “Quick Install” screen (see Fig. 5) fill in the next parameters:

- Uncheck the **Enable DHCP client** box: This configures the device to use a static IP address and gateway.
- **IPDACT IP Address**: A static IP address for the device.
- **IPDACT Mask**: IP subset mask the IPDACT pertains to.
- **IPDACT Gateway**: This parameter is the IP address for the router accessing Internet.
- **Account Number**: This is the IPDACT account number that identifies the subscriber and can be up to 8 digits long.
- **Main VisorALARM IP address** and **Backup VisorALARM IP address**: IP addresses for the main and backup VisorALARM.
- **UDP Port**: receivers’ UDP port where the IPDACT sends alarms and supervision messages.

STEP 9

Click on the ‘Configure’ button. This saves the parameter values in the IPDACT and restarts the device if required.

STEP 10

Once the IPDACT has the parameters, you need to register the IPDACT in the central. The next screen to appear after clicking on 'Configure' asks you if you want to register the IPDACT in the VisorALARM.

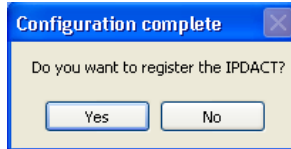


Fig. 10

To continue registering, click on the 'Yes' button. Subsequently enter the register password:



Fig. 11

Finally, select the 'Register' option. If the register operation has been successful, the following screen appears.

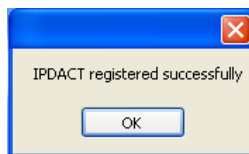


Fig. 12

Where this is unsuccessful a screen similar to the above appears indicating an error.

- **Error on answer:** Received data incorrect. Try again. If the error persists contact the technical service.
- **VA unreachable:** There is a problem in the local network. The network cable may be disconnected or the IP address for the IPDACT or gateway is incorrectly configured.
- **No answer:** There is a problem in the connection with the VisorALARM. This possibly is a problem in the client's connection to Internet, Internet or the network on the central side.

5. Installing the IPDACT using a Serial Port

If you have the IPDACT connected to the Local Area Network where the IPDACT is going to operate and the IPDACT is connected with the PC using a Serial Port for configuration purposes (Fig. 13), you do not need to use the IPDACT “Delayed auto-register” feature and you can perform the registration online.



Fig. 13

Follow the next steps in order to carry out the IPDACT installation:

STEP 1

Select “Quick Install” in the “Configuration Mode” group and “Serial Port” in the “Connection” box from the main screen.

STEP 2

In the “Port” box select the PC serial COM port where the IPDACT is connected. If the IPDACT password is the factory default password (24680) you can click on the “Connect” button to connect to the device. In any other case, enter the device password in the “User Password” box and click on “Connect”.

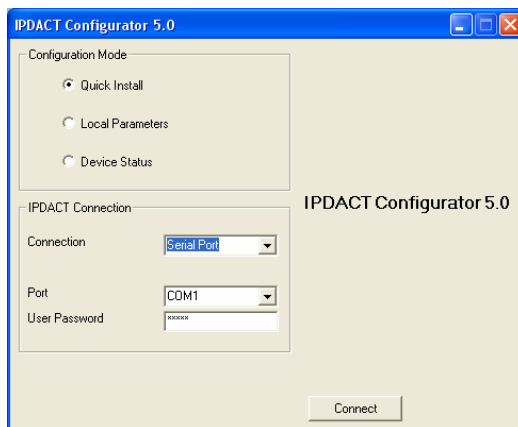


Fig. 14

STEP 3

If the connection is successful, the “Quick Install” configuration screen appears. Contrariwise, an error message appears indicating the problem. Two situations could arise:

- The IPDACT release is not compatible with the application.

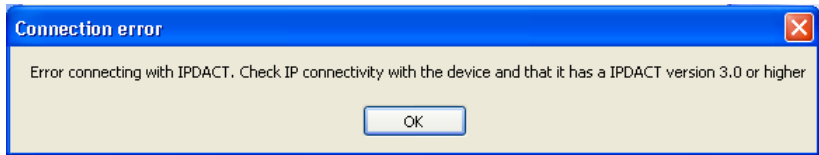


Fig. 15

- The user password is invalid:

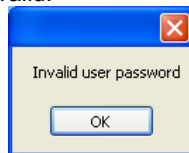


Fig. 16

STEP 4

If the LAN has a DHCP server you must fill in the next parameters in the “Quick Install” screen (see Fig. 5):

- Check the **Enable DHCP client** box: This configures the device to use DHCP to get an IP address and gateway from a DHCP server in the LAN.
- **Account Number**: This is the IPDACT account number that identifies the subscriber and can be up to 8 digits long.
- **Main VisorALARM IP address** and **Backup VisorALARM IP address**: IP addresses for the main and backup VisorALARM receivers.
- **UDP Port**: the receivers’ UDP port where the IPDACT sends alarms and supervision messages.

If the LAN does not have a DHCP server you must fill in the next parameters:

- Uncheck the **Enable DHCP client** box: This configures the device to use a static IP address and gateway.
- **IPDACT IP Address**: A static IP address for the device.
- **IPDACT Mask**: IP subset mask the IPDACT pertains to.
- **IPDACT Gateway**: This parameter is the IP address for the router accessing Internet.
- **Account Number**: This is the IPDACT account number that identifies the subscriber and can be up to 8 digits long.
- **Main VisorALARM IP address** and **Backup VisorALARM IP address**: IP addresses for the main and backup VisorALARM.
- **UDP Port**: receivers' UDP port where the IPDACT sends alarms and supervision messages.

STEP 5

Click on the 'Configure' button. This saves the parameter values in the IPDACT and restarts the device if required.

STEP 6

Once the IPDACT has the parameters, you need to register the IPDACT in the central. The next screen to appear after clicking on 'Configure' asks you if you want to register the IPDACT in the VisorALARM.

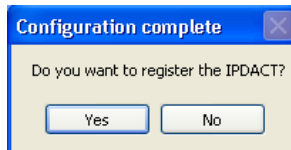


Fig. 17

To continue registering, click on the 'Yes' button. Subsequently enter the register password:



Fig. 18

Finally, select the 'Register' option. If the register operation has been successful, the following screen appears.

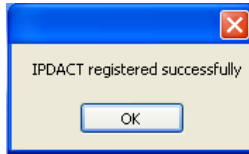


Fig. 19

Where this is unsuccessful a screen similar to the above appears indicating an error.

- **Error on answer:** Received data incorrect. Try again. If the error persists contact the technical service.
- **VA unreachable:** There is a problem in the local network. The network cable may be disconnected or the IP address for the IPDACT or gateway is incorrectly configured.
- **No answer:** There is a problem in the connection with the VisorALARM. This possibly is a problem in the client's connection to Internet, Internet or the network on the central side.

6. IPDACT Local Parameters

To access IPDACT local parameters, select the 'Local Parameters' option on the main screen (Fig. 2). Once the connection has been established, the application displays a screen as in the Fig. 20.

- **Output switching period:** The output can close and remain closed for the time the condition provoking the action lasts (connectivity failure with the central, PSTN failure or device monitoring failure) or a programmable period switch.
- **Action due to an alarm** (PSTN supervision): Where the PSTN line failure is detected, the IPDACT can: do nothing, generate an alarm, activate the output and both at the same time.
- **Alarm Transmission Retries:** This is the maximum number of times that IPDACT tries to send the same alarm to VisorALARM if there is no ACK from the receiver. Although this parameter is specified in the "Configuration Pattern" for the receiver it can be locally increased to deal with lossy Internet links.
- **Telephone Length:** This is the number of digits that the FACP dials when it sends a signal. This parameter is also specified in the "Configuration Pattern" for the receiver but can be locally changed if a prefix is needed for an outside line.

Output	
Output switching period [0-300]	10
Pstn Supervision	
Action due to alarm	BOTH
Alarm Transmission	
Alarm Transmission Retries	3
Telephone Length	2

Fig. 20

7. Device status

Device status lets you display a summary on the IPDACT status.

The General Information tab shows the following information line by line:

- Hardware identification (Teldat MIP v2 @ 11.0592 MHz).
- Serial Number (S/N: 0540/10007).
- Software identification (v4.1 US Jul 06 2006).
- Device time and date.
- Device MAC address and LAN link state.
- Input/Output state.
- Tamper state.
- PSTN line state.
- P1 jumper state.

The VisorALARM Link Status tab shows the status and IP connectivity history for the IPDACT and the VisorALARM receiver. For example if the “VisorALARM Link Status” tab shows the following information it means that:

State: Active (4)	◀ Currently the IPDACT is connected to the receiver.
03/05 01:46:02 Active	◀ Finally, at this time the IPDACT recovered connectivity.
03/05 01:45:59 Fail	◀ At this time the IPDACT lost connection with the receiver.
03/04 23:08:15 Active	◀ This was the first time the IPDACT was connected after reset.

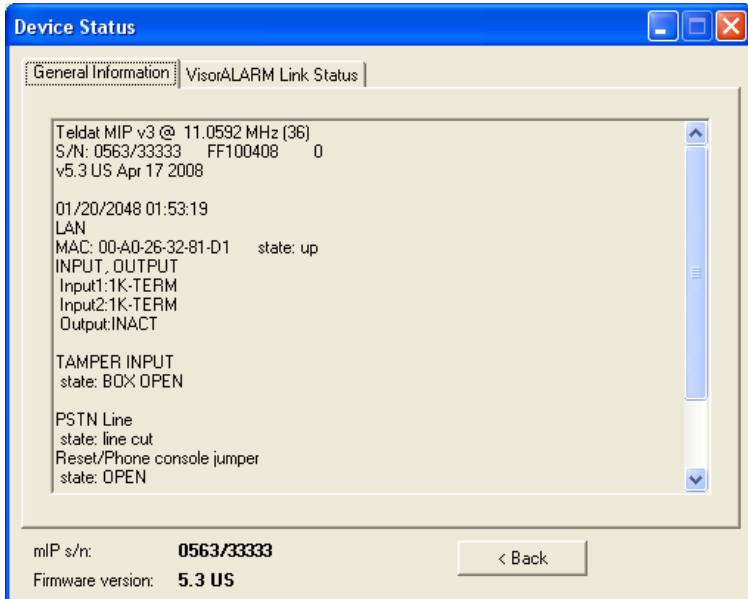


Fig. 21

8. Disconnecting an IPDACT

You can return to the main screen (see Fig. 2) from any of the configuration screens by using the 'Back' button. Disconnecting the IPDACT is carried out by selecting the 'Disconnect' button shown in the following figure:

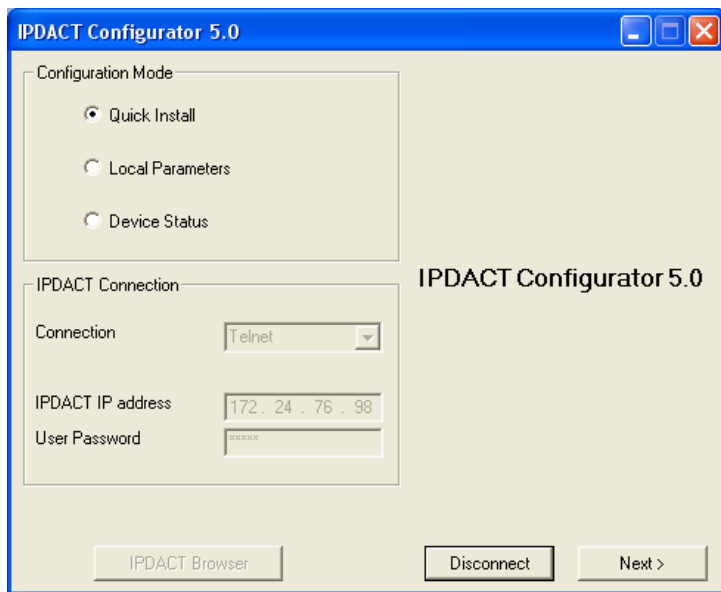


Fig. 22