



**SILENT
KNIGHT**

by Honeywell

SKE-ZN6 Zone Splitter Installation Instructions

The SKE-ZN64 is an evacuation zone splitter for use with the SKE-450. The SKE-ZN6 is capable of splitting the audio output from the main amp into six separate audio output zones or channels.

The SKE-ZN6 can be used in installations where the audio must to be split to different floors or zones to accommodate a safe and efficient evacuation process.

Note: Installation and wiring of this device must be done in accordance with NFPA 72 and local ordinances.

Compatibility

The SKE-ZN6 is compatible with the SKE-450 control panel.

Mounting

1. Unlock and open the SKE-450 control panel cabinet door.
2. Open the control panel cover door by removing the two retaining screws and rotating the door to the left. See Figure 1.

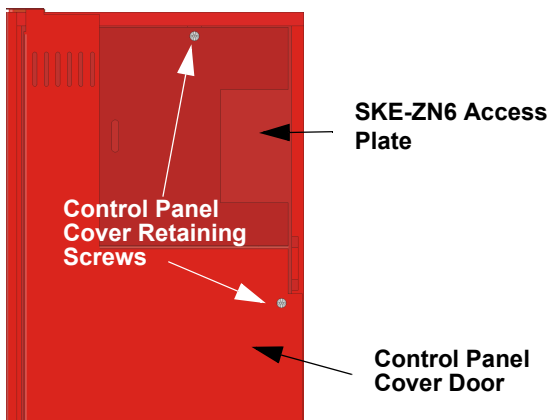


Figure 1: SKE-450 Cabinet With Control Panel Cover In Place

3. Remove the SKE-ZN6 access plate.

4. Mount the SKE-ZN6 to the SKE-450 cabinet mounting standoffs with the 7/10" screw-in standoffs provided.

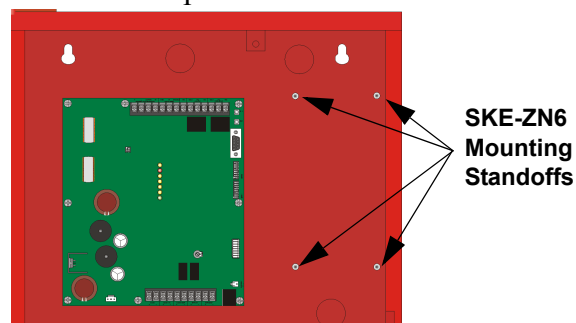


Figure 2: SKE-ZN6 Mounting Standoff Locations

5. Connect wiring harness to the expansion connector on the SKE-450 and to the direct connect pins on the SKE-ZN6. See Figure 3.

Note: Speaker outputs of the SKE-450 must not be used with the SKE-ZN6 because supervision will not be provided at the SKE-450.

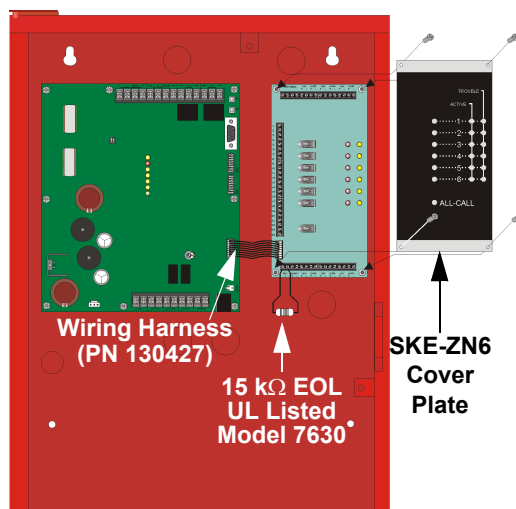


Figure 3: View With SKE-ZN6 Installed

6. Wire speaker to zone outputs as required by the installation specifications. See the *Speaker Wiring* section.
7. Attach the cover plate to the SKE-ZN6. See Figure 3.

Speaker Wiring

Each SKE-ZN6 supplies six Notification Appliance Circuits for speaker connection. The circuits can be supervised and wired Class B (Style Y) or Class A (Style Z). Each circuit is capable of 20 watts of power.

Note: The system can support a maximum of 50 watts of power.

1. Remove the cover plate on the SKE-ZN6. See Figure 3.
2. To wire speakers to the control panel using Class B (Style Y) supervision see Figure 4.

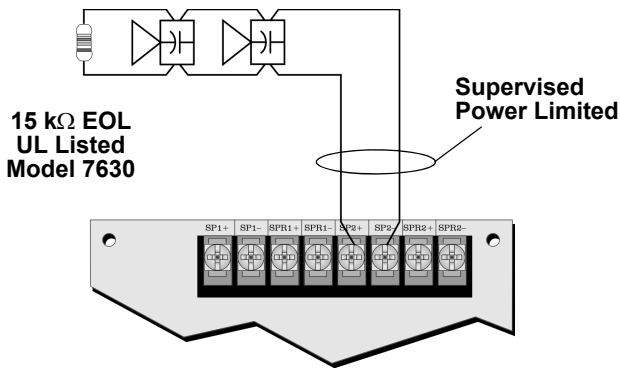


Figure 4: Class B (Style Y) Speaker Configuration

3. To wire speaker circuits to the control panel in a Class A (Style Z) configuration see Figure 5.

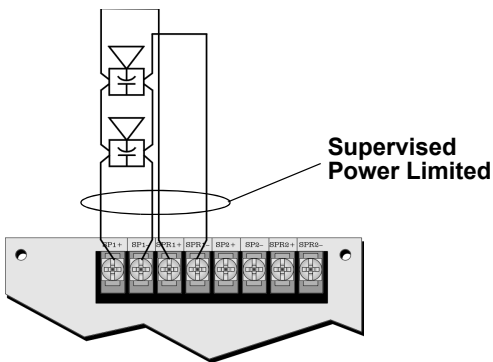


Figure 5: Class A (Style Z) Speaker Configuration

FACP Alarm Control Wiring

This section describes how to connect relay outputs from a FACP to control the four separate zones on the SKE-ZN6 four zone splitter.

1. Connect an active low relay or contact from the FACP to the Alarm Selects on the SKE-ZN6. See Figure 6.

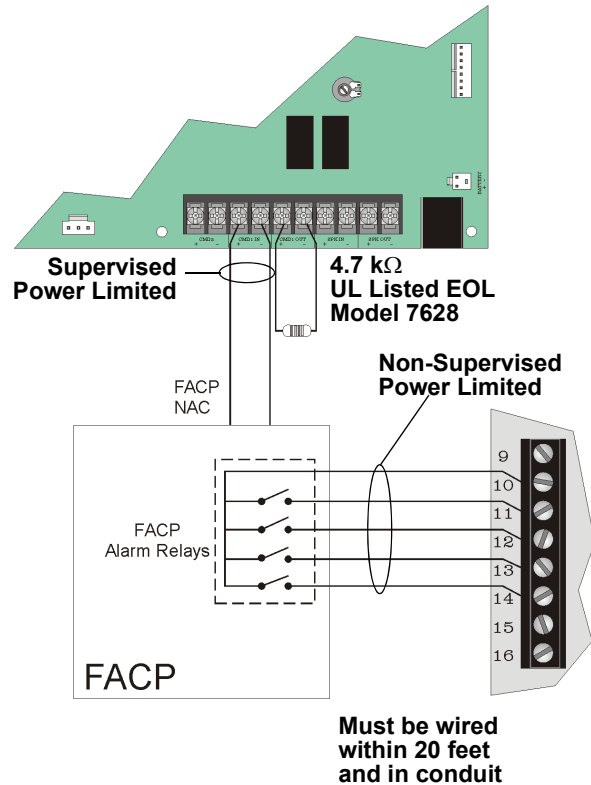


Figure 6: FACP Alarm Control Outputs

Electrical Specifications

Ground Fault Impedance To Any Terminal: 0 Ω
Audio Circuit: 25 Vrms or 70.7 Vrms
Standby Input Power: 27.4 VDC @ 35 mA
Alarm Input Power: 27.4 VDC @ 120 mA



SILENT KNIGHT

by Honeywell

7550 Meridian Circle
 Maple Grove, MN 55369-4927
 763-493-6455 or 800-328-0103
 Fax: 763-493-6475
 www.silentknight.com