



**SILENT
KNIGHT**

by Honeywell

Model 5815XL Signaling Line Circuit Expander

**Add flexibility to IntelliKnight® applications
with the 5815XL SLC Expander**

The Model 5815XL SLC Expander is a signaling line circuit controller for Silent Knight's IntelliKnight 5820XL addressable fire control panel. It allows you to add 127 addressable devices to the IntelliKnight system. Three 5815XLs can be added to the 5820XL for a maximum of 508 addressable devices per IntelliKnight system.

5815XL signaling circuits have the same functionality as the SLC that is built into the IntelliKnight panel and support the same addressable devices as the main panel. The 5815XL connects to the panel via the RS 485 bus and is housed in the IntelliKnight 5820XL or 5895XL cabinet.

Model 5815XL Signaling Line Circuit Expander

The 5815XL expands the capabilities of the IntelliKnight fire control panel by allowing 127 additional addressable devices to be attached to the system.

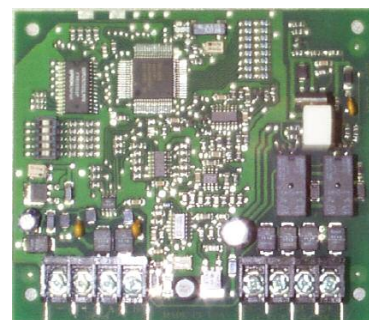
All functionality of the built-in SLC is provided with the 5815XL. Three 5815XLs can be added to an IntelliKnight system for a total of 508 addressable devices per system.

Operation

The 5815XL communicates with the IntelliKnight FACP via an RS 485 system bus. A green LED on the 5815XL board blinks to indicate good communication. If an addressable device on a 5815XL fails, the loop communicates the failure to the panel and continues to operate normally.

Features

- Adds 127 addressable devices to an IntelliKnight system
- Three 5815XLs per system
- 5815XL SLCs have same functionality as the 5820XL, including Style 6 (Class A) configuration
- Communicates with the IntelliKnight panel via RS 485 system bus
- LED indicates good communication
- House two inside the 5820XL cabinet, remotely mounted in the 5895XL cabinet, or mounted in the 5815RMK cabinet
- UL 864 listed, complies with NFPA 72 and 101
- Communicates on most standard wiring systems (ideal for retrofits)
- FM approved



Model 5815XL

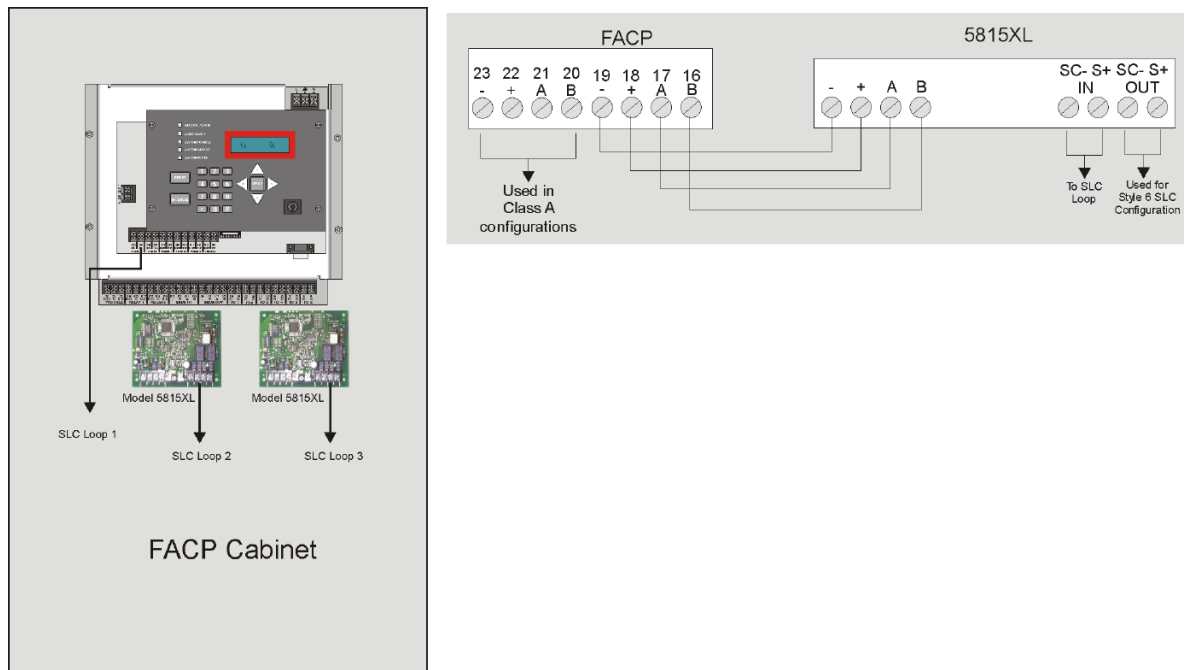
Specifications

System Capacity	5820XL FACP supports three 5815XL SLC Expanders. Each expander supports 127 addressable devices. The 5820XL supports 508 devices total.
Operating Voltage	24 VDC
Current Consumption (standby and alarm)	55 mA minimum - 125 mA max. (with 127 devices)
Ambient Temperature	32°F to 120°F (0°C to 49°C)
Mounting	Inside 5820XL FACP, 5895XL cabinet, or 5815RMK cabinet

Model 5815XL Signaling Line Circuit Expander

Engineering Specifications

The contractor shall provide a signaling circuit expander compatible with the IntelliKnight 5820XL fire control panel that allows 127 addressable devices to be added to the system. The IntelliKnight panel shall support three expanders for a total of 508 addressable devices per system. The expanders shall mount inside an IntelliKnight system cabinet, the FACP, the 5895XL, or the 5815RMK. The expanders shall provide signaling line circuits that have the same installation and functionality as built-in SLCs and shall communicate to the main panel via an RS 485 system bus. A green LED on the expander board shall blink to indicate communication with the main panel.



5815XL Block Diagram



This document is not intended to be used for installation purposes. We try to keep our product information up-to-date and accurate. We cannot cover all specific applications or anticipate all requirements. All specifications are subject to change without notice. For more information, contact Silent Knight 12 Clintonville Road, Northford, CT 06472-1610
Phone: (800) 328-0103, Fax: (203) 484-7118 www.silentknight.com

MADE IN AMERICA

FORM# 350098 Rev D
© 2009 Honeywell International Inc.