

Marketing Bulletin

Silent Knight is proud to announce the release of Version 10 firmware for the IntelliKnight product line. The following new feature have been added the control panels.

IntelliKnight Fire Panels Version 10.00 Release Features

- All detectors can now be configured as Supervisory Detector.

Point Type

Detector

Supervisory Detector

Supervisory Photo Duct

Supervisory Photo Duct

Supervisory Smoke (Photo

Supervisory Smoke (Ion)

Supervisory Heat

Supervisory Smoke (Acclim

Supervisory Heat (High Ter

Supervisory

Latching Silenceable

Relay Module

Output Point

NAC Module

Output Point

LED Module

2 Wire Detector Module

Silenceable

Unused

Conventional Point (Circuit) Types

Detector Input

Class A Supervision

Class B Supervision

2 Wire Detector

Silenceable

Contact Input

Class A Supervision

Class B Supervision

Supervisory

Latching Silenceable

Notification

Class A Supervision

Class B Supervision

Output

Aug. Power

Constant

Built-in Relay

Output Point

Unused

Block Selection Options

Apply the above point type settings to...

All Selected Addressable and Conventional Points

Only the Selected Addressable Points

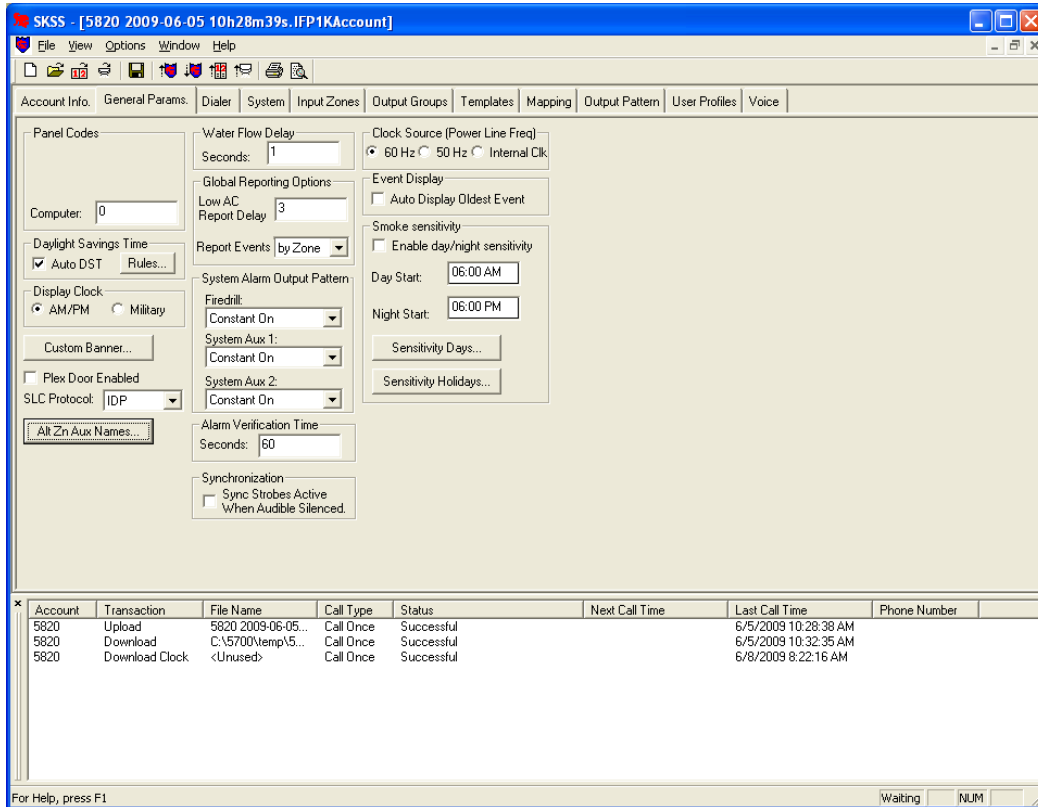
Only the Selected Conventional Points

OK

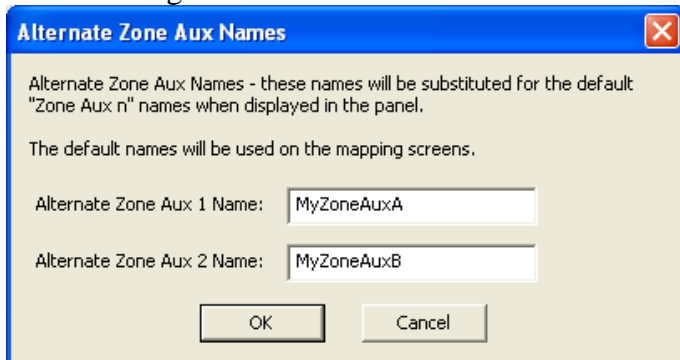
Cancel

- Configuration allows the user to program alternate names for the “Zone Aux 1” and “Zone Aux 2” settings. These names can be viewed in the Status Display and Event History.

Zone Aux names selected from the General Params. Tab.



10 digit field for Alternate Zone Aux Names



Alternate Zone Aux names displayed on the Software Mapping Screen

SKSS - [5820 2009-06-05 10h28m39s.IFP1KAccount]

File View Options Window Help

Account Info | General Params | Dialer | System | Input Zones | Output Groups | Templates | Mapping | Output Pattern | User Profiles | Voice

Input Zones

Zone	Name	Decl.Type
1	ZONE_1	1 Cnt

Output Groups

Group	Name
1	GROUP_1
249	GROUP_249
250	GROUP_250

Software Mapping

Zone	Det.Alrm	Trouble	Super.	Pre-Alarm	WaterFlow	ManPull	MxZoneAuxA	MxZoneAuxB
1	1,250		249		1,250	1,250		

Account	Transaction	File Name	Call Type	Status	Next Call Time	Last Call Time	Phone Number
5820	Upload	5820 2009-06-05...	Call Once	Successful		6/5/2009 10:28:38 AM	
5820	Download	C:\5700\temp\5...	Call Once	Successful		6/5/2009 10:32:35 AM	
5820	Download Clock	<Unused>	Call Once	Successful		6/8/2009 8:22:16 AM	

For Help, press F1

Waiting NUM

- Notifications selections can now be defined as an Output or Control Circuit. This is also viewed in the Status Display and Event History.

Point Type

Addressable Point Types

Detector

Supervisory Detector

Smoke(Photo)

Latching Silenceable

Accessory Base

No Base

Contact Input

Supervisory

Latching Silenceable

Relay Module

Output Point

NAC Module

Output Point

LED Module

2-Wire Detector Module

Silenceable

Unused

Conventional Point (Circuit) Types

Detector Input

Class A Supervision

Class B Supervision

2 Wire Detector

Silenceable

Contact Input

Class A Supervision

Class B Supervision

Supervisory

Latching Silenceable

Notification

Class A Supervision

Class B Supervision

Output

Output

Control Circuit

Constant

Built-in Relay

Output Point

Unused

Block Selection Options

Apply the above point type settings to...

All Selected Addressable and Conventional Points

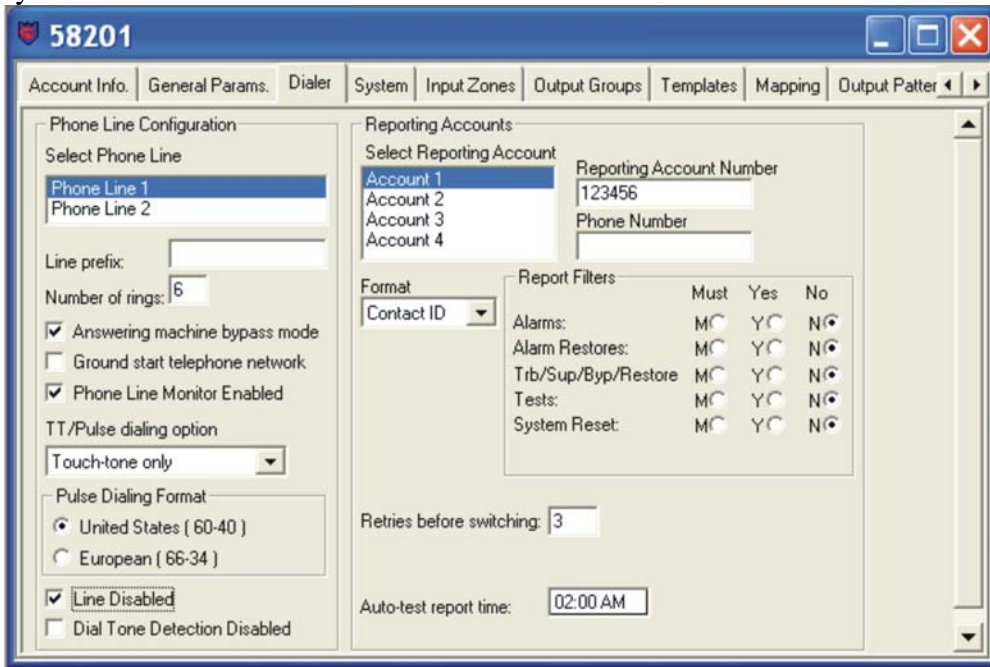
Only the Selected Addressable Points

Only the Selected Conventional Points

OK


Cancel

- “Dial Tone Disabled” feature which allows the panels to work with second party communication devices such as AES Intellinet, or cellular backup systems.



Look for the product boxes marked with this label in your alarm products retailer:

Version 10.0 Panel Firmware



- ◆ Supports Future SK series devices
- ◆ SKSS version 3.20 is required