



**SILENT
KNIGHT**

by Honeywell

MODEL 5496

Intelligent Power Module

**Installation and
Operations Manual**

Part Number 151276 Rev E

Contents

Section 1

Overview 1-1

1.1	5496 Description	1-1
1.2	Agency Requirements	1-1
1.3	About This Manual	1-1
1.4	How to Contact Silent Knight	1-1

Section 2

Before You Begin Installing 2-1

2.1	What's in the Box?	2-1
2.2	Environmental Specifications	2-1
2.3	Preventing Water Damage	2-1
2.4	5496 Board and Terminal Strip Description	2-2
2.5	Earth Fault Resistance	2-3
2.6	Calculating Current Draw and Standby Battery	2-4
2.6.1	Worksheet Requirements	2-4
	Filling in the Current Draw Worksheet	2-4
	2.6.1.1 Maximum Battery Standby Load	2-4
2.6.2	Current Draw Worksheet	2-5
2.6.3	Wire Routing	2-6

Section 3

Hardware Installation 3-1

3.1	AC Power	3-1
3.2	Battery Connection	3-2
3.3	Connecting the 5496 to the FACP	3-3
	3.3.1 Setting the Device ID	3-4
3.4	Notification Appliance Wiring	3-5
	3.4.1 Class A Supervised Wiring	3-5
	Class A Output Notification Circuits	3-5
	3.4.2 Class B Supervised Wiring	3-6
	Class B Output Notification Circuits	3-6
	3.4.3 Releasing Operations	3-6
	3.4.4 Auxiliary Power Configuration	3-7
	3.4.4.1 Door Holder Power	3-8
	3.4.4.2 Constant Power	3-8
	3.4.4.3 Resettable Power	3-8

Appendix A

Compatible Devices A-1

Silent Knight Fire Product Warranty and Return Policy

Section 1

Overview

1.1 5496 Description

The Model 5496 Intelligent Power Module provides additional power and notification circuits to a Silent Knight addressable FACP. The 5496 can power all IntelliKnight compatible notification appliances and auxiliary power modules.

The 5496 is capable of performing single or dual interlocking operations for pre-action and deluge releasing systems. See Section 8.6 of FACP installation manual.

The 5496 has four output circuits that can be configured as notification or auxiliary power circuits. Outputs are rated 3.0 A (6.0 A total for each 5496).

The 5496 is optically isolated, providing ground loop isolation and transient protection.

The 5496 provides configuration options that eliminate the need for synchronization modules when using AMSECO, Faraday, Gentex, System Sensor, or Wheelock synchronization appliances.

1.2 Agency Requirements

The 5496 has the same requirements as the main control panel. These requirements are listed in Silent Knight addressable FACP Installation Manuals. Silent Knight Addressable FACP Installation Manuals can be found on Silent Knight's web site at www.silentknight.com.

1.3 About This Manual

This manual covers installation of 5496 hardware. Software configuration information is contained in a Silent Knight addressable FACP Installation Manuals. Silent Knight Addressable FACP Installation Manuals can be found on Silent Knight's web site at www.silentknight.com.

1.4 How to Contact Silent Knight

If you have a question or encounter a problem not covered in this manual, contact Silent Knight Technical Support at 800-446-6444.

To order parts, contact Silent Knight Sales at 800-328-0103 or (203) 484-7161.

Section 2

Before You Begin Installing

2.1 What's in the Box?

The Model 5496 ships with the following hardware:

- A cabinet with all hardware assembled
- Two keys for the 5496 front door
- Ten 4.7K ohm end-of-line resistors

Note: For UL installations Model 7628 4.7k Ω end-of-line resistor (ordered separately) must be used.

- A battery wiring harness and jumper to wire batteries in series

2.2 Environmental Specifications

It is important to protect the 5496 control panel from water. To prevent water damage, the following conditions should be AVOIDED when installing the units:

- Do not mount directly on exterior walls, especially masonry walls (condensation)
- Do not mount directly on exterior walls below grade (condensation)
- Protect from plumbing leaks
- Protect from splash caused by sprinkler system inspection ports
- Do not mount in areas with humidity-generating equipment (such as dryers, production machinery)

When selecting a location to mount the 5496, the unit should be mounted where it will NOT be exposed to temperatures outside the range of 0°C-49°C (32°F-120°F) or humidity outside the range of 10%-93% at 30°C (86°F) noncondensing.

2.3 Preventing Water Damage

Water damage to the fire system can be caused by moisture entering the cabinet through the conduits. Conduits that are installed to enter the top of the cabinet are most likely to cause water problems. Installers should take reasonable precautions to prevent water from entering the cabinet. Water damage is not covered under warranty.

2.4 5496 Board and Terminal Strip Description

Figure 2-1 shows the 5496 circuit board including location of terminals and the dipswitch for setting the module ID.

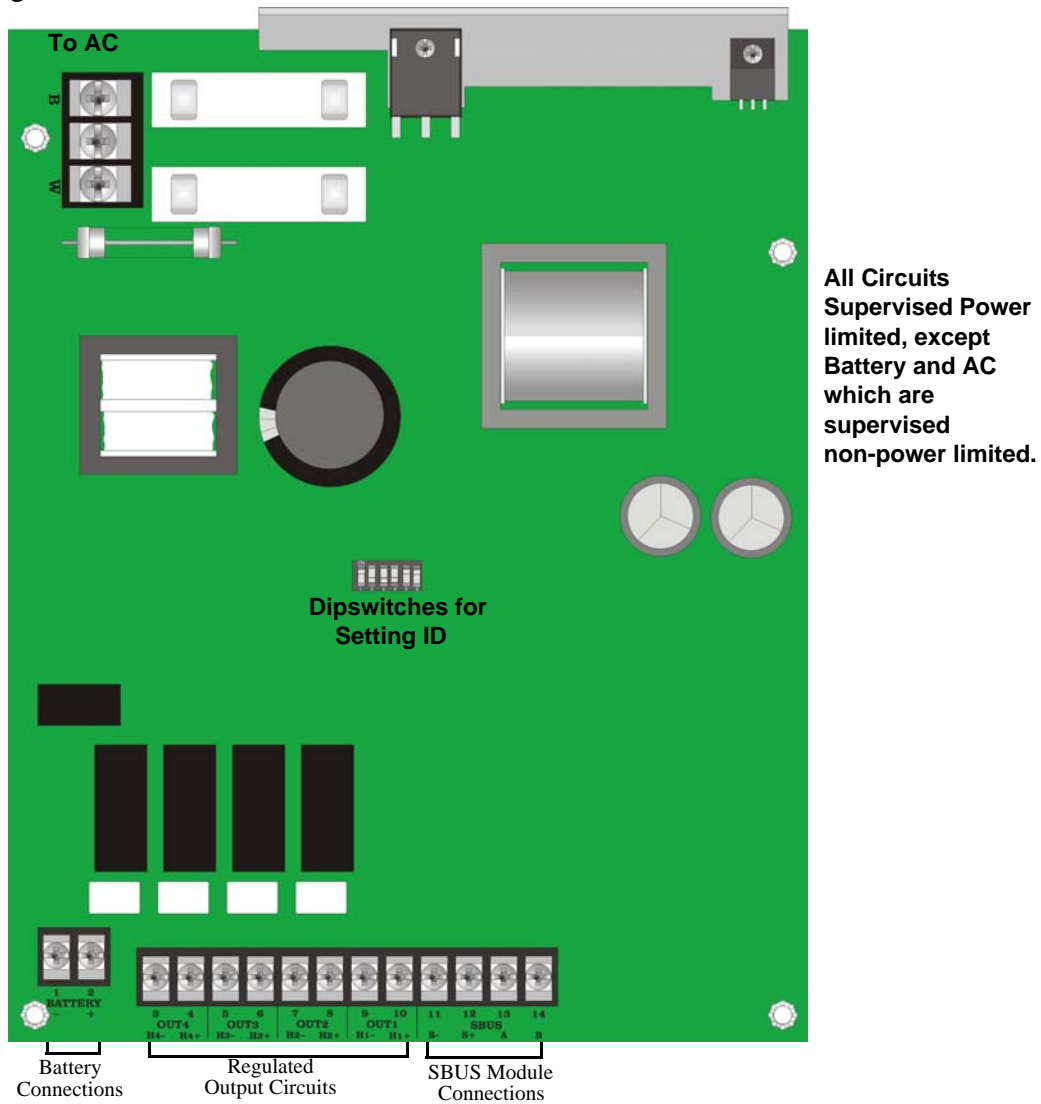


Figure 2-1 The 5496 Board Layout

Table 2-1 describes the 5496 connections and provides electrical ratings where appropriate.

Table 2-1: Terminal Strip Description and Electrical Ratings

Terminal # and Label		Description	Rating	
			Voltage	Current
	B	AC input (hot)	120 VAC, 60 Hz	2.7 A
	⏏	Earth ground	N/A	N/A
	W	AC input (neutral)	120 VAC, 60 Hz	2.7 A
1	-	Battery	Battery	24 VDC
2	+			
3	-	I/O 4*	Output circuit	24 VDC
4	+			
5	-	I/O 3*	Output circuit	24 VDC
6	+			
7	-	I/O 2*	Output circuit	24 VDC
8	+			
9	-	I/O 1*	Output circuit	24 VDC
10	+			
11	-	SBUS	SBUS power	24 VDC
12	+			
13	A		SBUS communication	5 VDC
14	B			

* Regulated/special application when used for releasing.

2.5 Earth Fault Resistance

Table 2-2 lists the earth fault resistance detection for each applicable terminal on the FACP.

Table 2-2: Earth Fault Resistance Values by Terminal

Function	Terminal Number	Terminal Label	Value (in ohms)
Battery	1	-	BATTERY
	2	+	
Notification Appliance Circuit 4	3	H4-	OUT4
	4	H4+	
Notification Appliance Circuit 3	5	H3-	OUT3
	6	H3+	
Notification Appliance Circuit 2	7	H2-	OUT2
	8	H2+	
Notification Appliance Circuit 1	9	H1-	OUT1
	10	H1+	

2.6 Calculating Current Draw and Standby Battery

This section is for helping you determine the current draw and standby battery needs for your installation.

2.6.1 Worksheet Requirements

Follow the steps below to determine 5496 current draw and standby battery requirements.

Filling in the Current Draw Worksheet

Refer Table 2-4 in Section 2.6.2 to complete the following steps.

1. Add up the current draw for all auxiliary devices and record in the table at Line B.
2. Add up all notification appliance loads and record in the table at Line C.
3. For notification appliances and auxiliary devices not mentioned in the manual, refer to the device manual for the current ratings.
4. Make sure that the total alarm current you calculated, including current for the panel itself, does not exceed 6.0 A. This is the maximum alarm current allowable.
5. Complete the remaining instructions in Table 2-4 to determine battery size requirements.

2.6.1.1 Maximum Battery Standby Load

Table 2-3 shows the maximum battery standby load for the 5496 based on 24 and 60 hours of standby. The standby load calculations of line J in the Current Draw Calculation Worksheet (Table 2-4) must be less than the number shown in Table 2-3 for the battery size used and standby hours required.

Table 2-3: Maximum Battery Standby Load

Rechargeable Battery Size	Max. Load for 24 hrs. Standby, 5 mins. Alarm	*Max. Load for 60 hrs. Standby, 5 mins. Alarm
7 AH	270 mA	105 mA
12 AH	475 mA	190 mA
18 AH	685 mA	270 mA
35 AH	1370 mA	540 mA

* Required for NFPA 72 Auxiliary Protected Fire Alarm systems for Fire Alarm Service (City Box) and Remote Station Protected Fire Alarm systems (Polarity Reversal) and Digital Alarm Communicator/Transmitter (DACT).

Note: 33 max battery size for FM (Factory Mutual) installations

2.6.2 Current Draw Worksheet

For each 5496 in the installation, use this worksheet to determine current requirements during alarm/battery standby operation. (Copy this page if additional space is required.)

Table 2-4: Current Draw Calculation Worksheet

Device		Number of Devices	Current per Device		Standby Current	Alarm Current
<i>For each device use this formula:</i>		<i>This column</i>	<i>X This column</i>	=	<i>Current per number of devices.</i>	
5496 Intelligent Power Module (Current draw from battery)	1	Standby:	40 mA		40 mA	
		Alarm:	160 mA			160 mA
5496 Current					40 mA	160 mA
Auxiliary Devices		<i>Refer to device manual for current ratings.</i>				
		Alarm/Standby	mA		mA	mA
		Alarm/Standby	mA		mA	mA
		Alarm/Standby	mA		mA	mA
		Alarm/Standby	mA		mA	mA
Auxiliary Devices Current					mA	mA
Notification appliances		<i>Refer to device manual for current ratings.</i>				
		Alarm:	mA		0 mA	mA
		Alarm:	mA		0 mA	mA
		Alarm:	mA		0 mA	mA
		Alarm:	mA		0 mA	mA
Notification Appliances Current					0 mA	mA
Total current ratings of all devices in system (line A + line B + line C)					mA	mA
Total current ratings converted to amperes (line D x .001):					A	A
Number of standby hours (24 or 60 for NFPA 72, Chapter 1, 1-5.2.5).					H	
Multiply lines E and F. Total standby AH					AH	
Alarm sounding period in hours. (For example, 5 minutes = .0833 hours.)						H
Multiply lines E and H. Total alarm AH						AH
Add lines G and I. Total standby and alarm AH					AH	

2.6.3 Wire Routing

You must follow power-limited wiring techniques, which include maintaining one-quarter inch spacing between power-limited and non-power limited circuits and separating high and low voltage circuits.

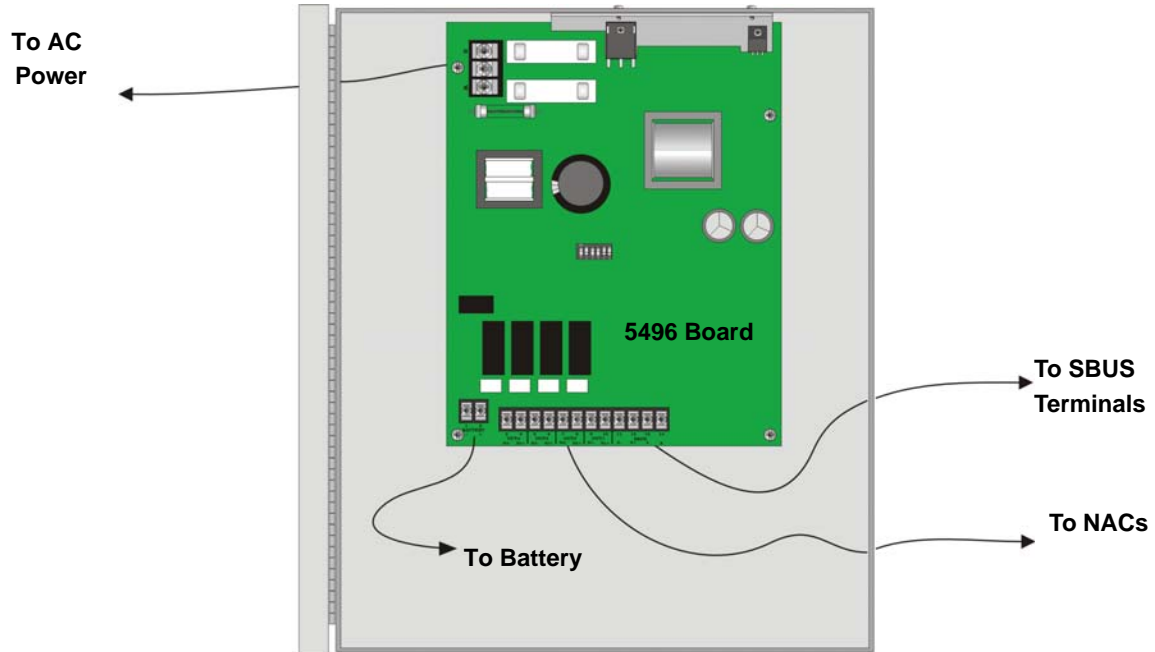


Figure 2-2 Wire Routing Example

Section 3

Hardware Installation

5496 installation involves the following steps:

- Connect AC power (Section 3.1) and backup battery (Section 3.2).
- Make physical connection to a Silent Knight addressable FACP (see Section 3.3).
- Set an ID for the 5496 (Section 3.3.1).
- Make physical connection to any outputs that will be powered by this 5496. See Section 3.4 for notification appliance wiring information. Refer to Silent Knight addressable FACP Installation Manuals for software configuration information and other information about installing outputs. Silent Knight Addressable FACP Installation Manuals can be found on Silent Knight's web site at www.silentknight.com.

3.1 AC Power

At installation, connect the AC terminals to 120 VAC source as shown in Figure 3-1. It may be necessary for a professional electrician to make this connection.

The AC terminals are rated as 120 VAC, 50 or 60 Hz, 2.5 A.

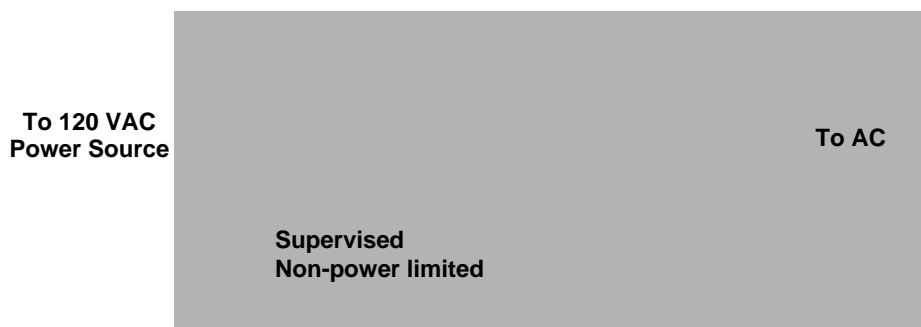


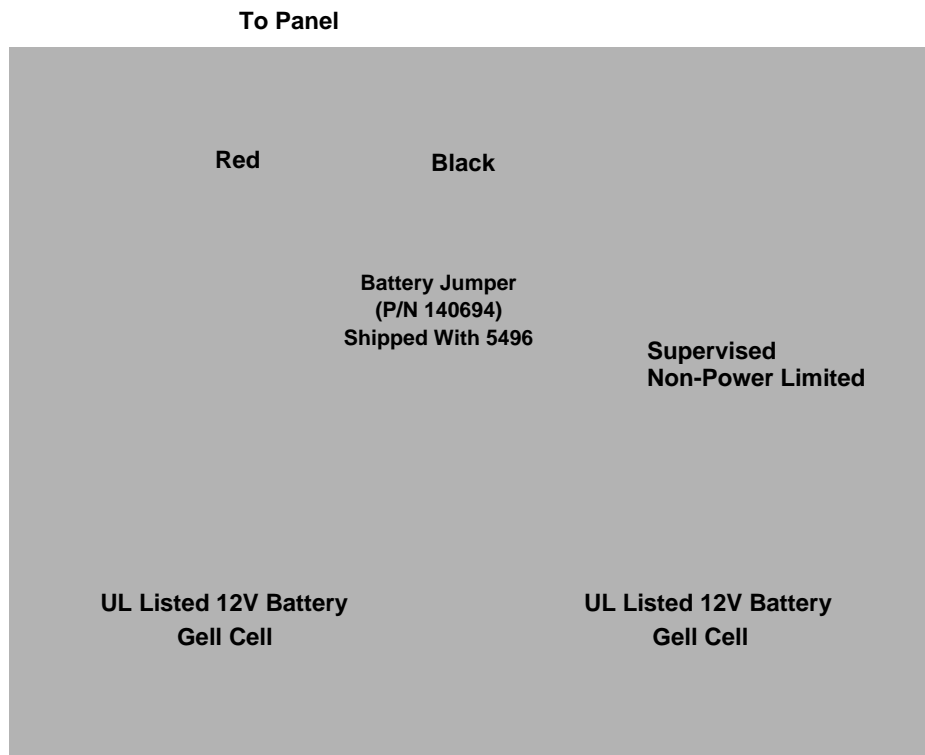
Figure 3-1 AC Power Connection

3.2 Battery Connection

The 5496 battery charge capacity is 7.0 AH not to exceed 35.0 AH. Use 12V batteries of the same AH rating. It is recommended that you replace batteries every five years. Determine the correct AH rating per your current load calculation (see Table 2-4).

Note: If you require the power of back up batteries that are too large for the 5496, you can use the RBB cabinet. The RBB Remote Battery Box, holds batteries up to the 35 AH size. (Refer to P/N 151306 for RBB installation instructions.

Wire batteries in series to produce a 24-volt equivalent. Do not parallel batteries to increase the AH rating.



Replace batteries every 5 years.

Figure 3-2 Battery Connection

3.3 Connecting the 5496 to the FACP

1. Connect the 5496 to the appropriate SBUS. The 5496 is connected directly to a Silent Knight addressable FACP.
2. Use the on-board dipswitch to assign an ID number to the 5496. (See Section 3.3.1) Figure 2-1 shows the location of the dipswitches on the 5496 board.
3. Configure the 5496 module by adding it to the system (through JumpStart or manually). You can also assign a name to the module. These procedures are described in Silent Knight addressable FACP Installation Manuals. Silent Knight Addressable FACP Installation Manuals can be found on Silent Knight's web site at www.silentknight.com.

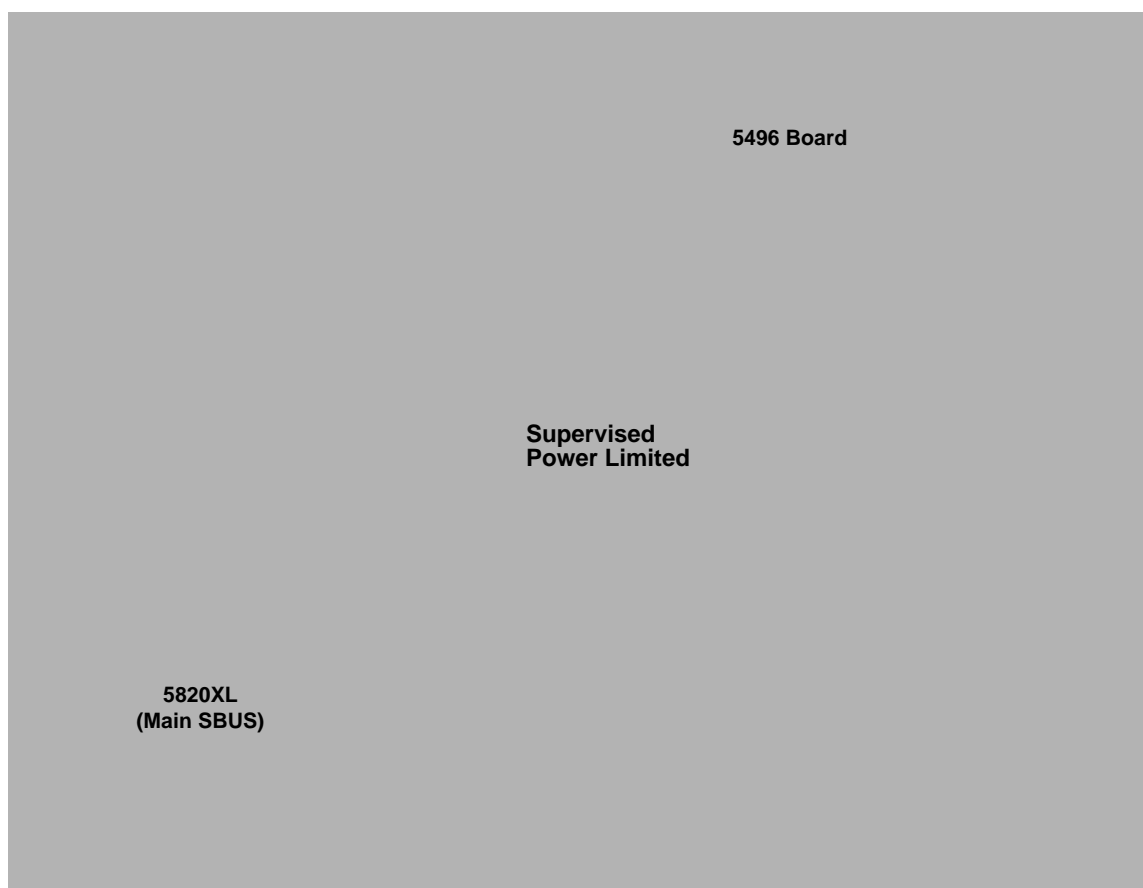


Figure 3-3 Class B 5496 Connection to FACP

3.3.1 Setting the Device ID

All SBUS modules in the system must have a unique number (1-31) to identify them to the FACP. Use the DIP switch on the 5496 board to set the module ID number. Figure 2-1 shows the location of the dipswitch on the board. Figure 3-4 shows dipswitch setting and the corresponding module ID numbers.

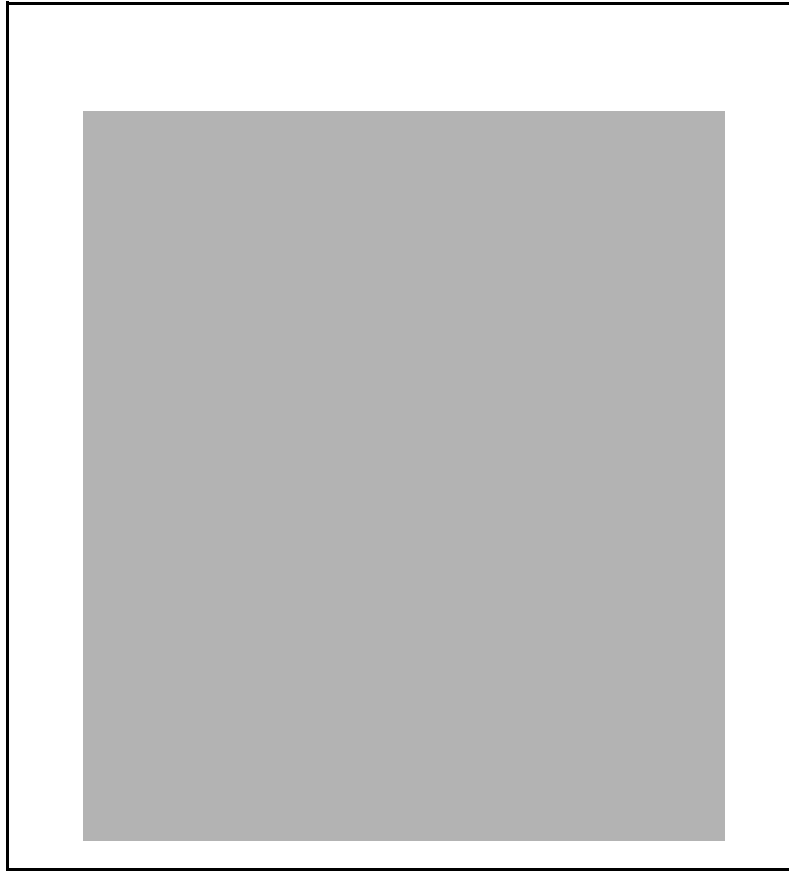


Figure 3-4 Possible Module Addresses

3.4 Notification Appliance Wiring

Note: Not all devices can use the Sync feature. Be sure to check Table A-1 in Appendix A to ensure the device you have chosen will work with this feature.

3.4.1 Class A Supervised Wiring

Figure 3-5 shows how to wire for Class A output supervision. Use in/out wiring methods for proper supervision. Refer to Section 4 for notification appliances compatible with the 5496.

Class A Output Notification Circuits

The configuration shown in Figure 3-5 shows two, 3-amp devices wired as Class A circuits. When you are using the outputs as Class A circuits, loop the wiring back to the corresponding circuit pair. For Class A wiring, no external EOL is necessary since it is built into the 5496 board.

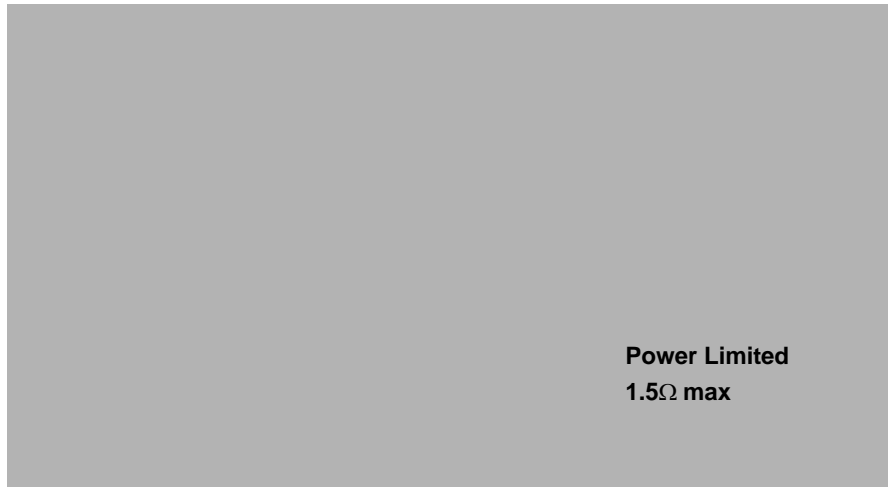


Figure 3-5 Class A Supervised Input/Output Connections

3.4.2 Class B Supervised Wiring

Figure 3-6 shows how to wire for Class B output supervision. Use in/out wiring methods for proper supervision. Refer to Section 4 for notification appliances that must be used with the 5496.

Class B Output Notification Circuits

Figure 3-6 shows four, 1.5 amp devices wired as Class B circuits.

Place a 4.7k ohm EOL resistor (provided) at the end of each circuit to enable supervision when using all outputs as Class B notification appliance circuits. The 4.7k EOLs must be wired to the terminals whether or not you are using all output terminals.



Figure 3-6 Regulated Class B Supervised Input/Output Connections

3.4.3 Releasing Operations

Approved releasing solenoids are list in Table 3-1. Do not mix cross alarming zones with smoke verification zones. There must be at least two automatic detection devices in each protected space. Spacing must be reduced to 0.7 times the linear spacing in accordance with NFPA 72.

Table 3-1: Approved Releasing Solenoids

Manufacturer	Part Number	Rating	Current	Freq
Asco	T8210A107	24 VDC	3A max	0 Hz
	8210G207	24 VDC	3A max	0 Hz

3.4.4 Auxiliary Power Configuration

Output circuits 1-4 on the control panel can be used as auxiliary power circuits. The three types of auxiliary power available are:

- Door Holder (see Section 3.4.4.1 for description)
- Constant (see Section 3.4.4.2 for description)
- Resettable (see Section 3.4.4.3 for description)

Auxiliary power circuits are power limited. Each circuit can source up to 3A (total current for all output circuits must not exceed 6 A).

To configure an output circuit as auxiliary power:

1. Wire the output circuit(s) that will be used for auxiliary power. See Figure 3-7 for location of the output circuits.
2. Configure the auxiliary power output through programming for Door Holder, Constant or Resettable power.

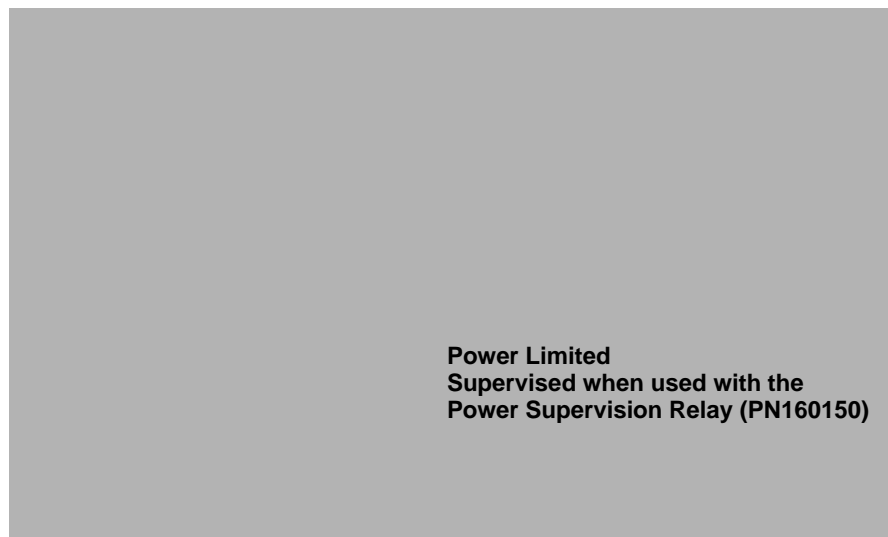


Figure 3-7 Output Circuits Used as Auxiliary Power

3.4.4.1 Door Holder Power

Door holder is intended for fire door applications. When there are no alarms in the system and the panel has AC power, door holder circuits have 24-volt power present at their terminals. Any alarm will cause power to discontinue. Power will be re-applied when the system is reset. If AC power is off for more than 15 seconds the auxiliary door holder power will be discontinued to conserve the battery backup power. When AC power is restored, power is immediately restored to the door holder circuits.

3.4.4.2 Constant Power

Use constant power for applications that require a constant auxiliary power source. Power is always present at Constant circuits.

3.4.4.3 Resettable Power

Resettable power is typically used to power beam detectors, flame detectors, and conventional 4-wire smoke detectors. For circuits selected as Resettable, 24-volt power is always present at the terminals unless a system reset occurs. If a system reset occurs, power is removed from the terminals for 30 seconds, then re-applied.

Appendix A

Compatible Devices

For proper operation, you must use polarized devices with a Model 7628 4.7k ohm EOL resistor on each circuit. All supervised notification appliances used with the 5496 must be polarized.

A.1 Notification Appliances

Note: Not all devices can use the Sync feature, be sure to check A.1 to ensure the device you have chosen will work with this feature. This control is UL listed for single circuit synchronization.

Table A-1 below lists notification appliances compatible with the fire alarm control panel. Appliances which can be synchronized indicate the type of sync available in the columns marked Audio and/or Visual

Table A-1: Compatible Notification Appliances

Manufacturer	Model	Audio	Visual	Type
AMSECO	SH24W-153075	✓	✓	Horn/Strobe
	SAD24-153075		✓	Strobe
	SAD24-75110		✓	Strobe
	SL24W-75110		✓	Strobe
	SL24C-3075110		✓	Strobe
	SLB24-75		✓	Strobe
	RSD24-153075		✓	Strobe
	RSD24-75110		✓	Strobe
	SH24W-75110	✓	✓	Horn/Strobe
	SH24W-3075110	✓	✓	Horn/Strobe
	SHB24-75	✓	✓	Horn/Strobe
	SCM24W-153075	✓		Chimes/Strobe
	SCM24W-75110	✓		Chimes/Strobe
	SCM24C-3075110	✓		Chimes/Strobe
	SCM24C-177	✓		Chimes/Strobe
	H24W	✓		Horn
	H24R	✓		Horn

Table A-1: Compatible Notification Appliances

Manufacturer	Model	Audio	Visual	Type
Faraday	446			Vibrating Bell
	476			Vibrating Bell
	477			Single Stroke Bell
	2700 -M, -R, -T, -Y, -Z			Strobe
	2701 Series			Strobe
	2705 Series			Strobe
	2820	✓	✓	Sync Temporal Horn/Strobe
	2821	✓	✓	Sync Temporal Horn/Strobe
	2824	✓	✓	Horn Strobe
Faraday	5333			Multi-Tone Horn)
	5336			Multi-Tone Horn/Strobe
	5337			Multi-Tone Horn/Strobe
	5338			Multi-Tone Horn/Strobe
	5343			Single Tone Horn/Strobe
	5346			Electronic Horn with Strobe
	5347			Electronic Horn with Strobe
	5348			Single Tone Horn/Strobe
	5373			8-Tone Horn/Strobe
	6321			Sync Mini Horn/Strobe
	6322			Mini Horn/Sync Strobe
	6380			8-Tone Electronic Signal/Strobe
	5376			8-Tone Horn/Strobe
	5377			8-Tone Horn/Strobe
	5378			8-Tone Horn/Strobe
	5383			8-Tone Horn/Strobe with Sync Strobe
	5386			8-Tone Horn/Strobe with Sync Strobe
	5387			8-Tone Horn/Strobe with Sync Strobe
	5388			8-Tone Horn/Strobe with Sync Strobe
	5508			Single Gang Sync Strobe
	5509			Strobe
	5510			Strobe
	5511			Strobe
	5512			Strobe
	5516			Strobe
	5517			Strobe
	5518			Strobe
	5519			Strobe
	5521			4" Square Sync Strobe
	5522			4" Square Sync Strobe
6120			Horn	
6140			Horn	

Table A-1: Compatible Notification Appliances

Manufacturer	Model	Audio	Visual	Type
Faraday	6223			Horn
	6226			Horn/Strobe
	6227			Horn/Strobe
	6228			Horn/Strobe
	6243			Electron-Mechanical Horn
	6244			Electron-Mechanical Horn
	6245			Electron-Mechanical Horn
	6246			Electron-Mechanical Horn/Strobe
	6247			Electron-Mechanical Horn/Strobe
	6248			Electron-Mechanical Horn/Strobe
	6300			Mini-Horn
	6301			Mini-Horn
	6302			Mini-Horn
	6310			Mini-Horn/Strobe
	6311			Mini-Horn/Strobe
	6312			Mini-Horn/Strobe
	6314 Series -M, -R, -T, -Y, -Z			Strobe
6320			Sync Mini Horn/Strobe	
FCI	S2415-FC			Strobe
	S241575-FC			Strobe
	S2430-FC			Strobe
	130-3117C			Mini Horn
	130-3147C			Mini Horn
	BLV-6			Vibrating Bell
	BLV-10			Vibrating Bell
	BLVCH			Vibrating Chime
	H12/24-FC			Horn
	H12/24W-FC			Horn
	H12/24K-FC			Horn
	HC12/24-FC			Horn
	HC12/24W-FC			Horn
	HC12/24K-FC			Horn

Table A-1: Compatible Notification Appliances

Manufacturer	Model	Audio	Visual	Type
FCI	P2415-FC			Horn/Strobe
	P2415W-FC			Horn/Strobe
	P2415K-FC			Horn/Strobe
	P241575-FC			Horn/Strobe
	P241575W-FC			Horn/Strobe
	P241575F-FC			Horn/Strobe
	P241575K-FC			Horn/Strobe
	P2430-FC			Horn/Strobe
	P2430W-FC			Horn/Strobe
	P2430K-FC			Horn/Strobe
	P2475-FC			Horn/Strobe
	P2475W-FC			Horn/Strobe
	P2475K-FC			Horn/Strobe
	P24110-FC			Horn/Strobe
	P24110W-FC			Horn/Strobe
	P24110K-FC			Horn/Strobe
	S2430W-FC			Strobe
	S2430K-FC			Strobe
	S2475-FC			Strobe
	S2475W-FC			Strobe
	S2475K-FC			Strobe
	S24110-FC			Strobe
	S24110W-FC			Strobe
S24110K-FC			Strobe	
Federal Signal	450			Horn
	VALS			Horn/Strobe
Gentex	GEC-24-15	✓	✓	Horn/Strobes
	GEC-24-30	✓	✓	Horn/Strobes
	GEC-24-60	✓	✓	Horn/Strobes
	GEC-24-75	✓	✓	Horn/Strobes
	GEC-24-177	✓	✓	Horn/Strobes
	GEC-24-110	✓	✓	Horn/Strobe
	GEC-24-15/75	✓	✓	Horn/Strobe
	GX91	✓		MiniHorn Steady Tone
	GX93	✓		MiniHorn Temporal Tone

Table A-1: Compatible Notification Appliances

Manufacturer	Model	Audio	Visual	Type
Gentex	HG124			Horn
	HS24-15	✓	✓	Horn/Strobe
	HS24-30	✓	✓	Horn/Strobe
	HS24-60	✓	✓	Horn/Strobe
	HS24-75	✓	✓	Horn/Strobe
	HS24-110	✓	✓	Horn/Strobe
	HS24-1575	✓	✓	Horn/Strobe
	GCC24	✓	✓	Multi Candella Horn/Strobe Ceiling Mount
	GCCR24	✓	✓	Multi Candella Horn/Strobe Ceiling Mount
	GCS24		✓	Multi Candella Strobe Ceiling Mount
	GCSR24		✓	Multi Candella Strobe Ceiling Mount
	GECR-24	✓	✓	Multi Candella Horn/Strobe
	GES24-15		✓	Strobes
	GES24-30		✓	Strobes
	GES24-60		✓	Strobes
	GES24-75		✓	Strobes
	GES24-110		✓	Strobes
	GES24-15/75		✓	Strobes
	GES24-177		✓	Strobes
	GES3-24		✓	Multi Candella Strobe
	GESR-24		✓	Multi Candella Strobe
	GEH-24	✓		Horn
	ST24-30		✓	Strobe
	ST24-60		✓	Strobe
	ST24-75		✓	Strobe
	ST24-110		✓	Strobe
	ST24-1575		✓	Strobe
	WGEC24-75W	✓	✓	Weatherproof Horn/Strobe
	WGES24-75W		✓	Weatherproof Strobe
	WGMS-24-X			Horn/Strobe

Table A-1: Compatible Notification Appliances

Manufacturer	Model	Audio	Visual	Type
System Sensor	CHR	✓		Chime
	CHW	✓		Chime
	CHSR	✓	✓	2-Wire Chime/Strobe
	CHSW	✓	✓	2-Wire Chime/Strobe
	HR	✓	✓	Horn
	HW		✓	Horn
	HRK		✓	Horn
	P2R	✓	✓	2-Wire Horn/Strobe
	P2R-P	✓	✓	2-Wire Horn/Strobe
	PC2R	✓	✓	2-Wire Horn/Strobe
	PC2R-P	✓	✓	2-Wire Horn/Strobe
	P2RH	✓	✓	2-Wire Horn/Strobe High Candela
	P2RH-P	✓	✓	2-Wire Horn/Strobe High Candela
	PC2RH	✓	✓	2-Wire Horn/Strobe High Candela
	PC2RH-P	✓	✓	2-Wire Horn/Strobe High Candela
	P2W	✓	✓	2-Wire Horn/Strobe
	P2W-P	✓	✓	2-Wire Horn/Strobe
	PC2W	✓	✓	2-Wire Horn/Strobe
	PC2W-P	✓	✓	2-Wire Horn/Strobe
	P2WH	✓	✓	2-Wire Horn/Strobe High Candela
	P2WH-P	✓	✓	2-Wire Horn/Strobe High Candela
	PC2WH	✓	✓	2-Wire Horn/Strobe High Candela
	PC2WH-P	✓	✓	2-Wire Horn/Strobe High Candela
	P2RK	✓	✓	2-Wire Horn/Strobe
	PC2RK	✓	✓	2-Wire Horn/Strobe
	P2RHK	✓	✓	2-Wire Horn/Strobe High Candela
	PC2RHK	✓	✓	2-Wire Horn/Strobe High Candela
	P4R	✓	✓	4-Wire Horn/Strobe
	PC4R	✓	✓	4-Wire Horn/Strobe
	P4RH	✓	✓	4-Wire Horn/Strobe High Candela
P4W	✓	✓	4-Wire Horn/Strobe	

Table A-1: Compatible Notification Appliances

Manufacturer	Model	Audio	Visual	Type	
System Sensor	PC4W	✓	✓	4-Wire Horn/Strobe	
	P4WH	✓	✓	4-Wire Horn/Strobe High Candela	
	PC4WH	✓	✓	4-Wire Horn/Strobe High Candela	
	P4RK	✓	✓	4-Wire Horn/Strobe	
	PC4RK	✓	✓	4-Wire Horn/Strobe	
	P4RHK	✓	✓	4-Wire Horn/Strobe High Candela	
	PC4RHK	✓	✓	4-Wire Horn/Strobe High Candela	
	PC4RH	✓	✓	4-Wire Horn/Strobe High Candela	
	SR			✓	Strobe
	SR-P			✓	Strobe
	SCR			✓	Strobe
	SCR-P			✓	Strobe
	SRH			✓	Strobe High Candela
	SRH-P			✓	Strobe High Candela
	SCRH			✓	Strobe High Candela
	SCRH-P			✓	Strobe High Candela
	SW			✓	Strobe
	SW-P			✓	Strobe
	SCW			✓	Strobe
	SCW-P			✓	Strobe
	SWH			✓	Strobe High Candela
	SWH-P			✓	Strobe High Candela
	SCWH			✓	Strobe High Candela
	SCWH-P			✓	Strobe High Candela
	SRK			✓	Strobe
	SCRK			✓	Strobe
	SRHK			✓	Strobe High Candela
	SCRHK			✓	Strobe High Candela

Table A-1: Compatible Notification Appliances

Manufacturer	Model	Audio	Visual	Type
Wheelock	AH-12	✓		Horn
	AH-24	✓		Horn
	AH-12WP	✓		Horn Weatherproof
	AH-24WP	✓		Horn Weatherproof
	AMT-241575W	✓	✓	Multi-Tone Horn Strobe
	AMT-24MCW		✓	Mutli-Tone Horn Strobe
	AMT-241575W-NYC	✓	✓	Multi-Tone Horn Strobe
	AMT-12/24	✓		Multi-tone Horn
	AMT-12/24 NYC	✓		Multi-tone Horn
	AS-121575W		✓	Horn/Strobe
	NH-12/24	✓		Horn
	AS-241575W	✓	✓	Horn/Strobe
	AS-24MCC	✓	✓	Horn/Strobe
	AS-24MCCH	✓	✓	Horn/Strobe
	AS-24MCW	✓	✓	Horn/Strobe
	AS-24MCWH	✓	✓	Horn/Strobe
	ASWP-2475W	✓	✓	Horn/Strobe Weatherproof
	ASWP-2475C	✓	✓	Horn/Strobe Weatherproof
	ASWP-24MCWH	✓	✓	Horn/Strobe
	ASWP-24MCCH	✓	✓	Horn/Strobe
	CH-70	✓		Chime
	CH-90	✓		Chime
	CH70-241575W		✓	Chime/Strobe
	CH70-24MCW		✓	Chime/Strobe
	CH70-24MCWH		✓	Chime/Strobe
	CH90-24MCC		✓	Chime/Strobe
	CH90-24MCCH		✓	Chime/Strobe
	HS-24	✓		Horn
	HS4-241575W	✓	✓	Horn/Strobe
	HS4-24MCW	✓	✓	Horn/Strobe
	HS4-24MCWH	✓	✓	Horn/Strobe
	HS4-24MCC	✓	✓	Horn/Strobe
	MIZ-24S	✓	✓	Mini Horn Strobe
	MT-121575W		✓	MultitoneHorn Strobe
	MT-241575W	✓	✓	Multitone Horn Strobe
	MT-24MCW		✓	Multitone Horn Strobe
	MTWP-2475W		✓	Multitone Horn Strobe
	MTWP-2475C		✓	Multitone Horn Strobe
	MTG-121575W	✓	✓	Multitone Horn Strobe
	MTR-121575W	✓	✓	Multitone Horn Strobe

Table A-1: Compatible Notification Appliances

Manufacturer	Model	Audio	Visual	Type	
Wheelock Con't	MTWPA-2475W	✓	✓	Multitone Horn Strobe	
	MTWPB-2475W	✓	✓	Multitone Horn Strobe	
	MTWPG-2475W	✓	✓	Multitone Horn Strobe	
	MTWPR-2475W	✓	✓	Multitone Horn Strobe	
	MTWPA-24MCCH	✓	✓	Multitone Horn Strobe	
	ZNH	✓		Horn	
	NS-121575W	✓	✓	Horn/Strobe	
	NS-241575W	✓	✓	Horn/Strobe	
	NS-24MCW	✓	✓	Horn/Strobe	
	NS-24MCC	✓	✓	Horn/Strobe	
	NS-24MCCH	✓	✓	Horn/Strobe	
	ZNS-MCW	✓	✓	Horn/Strobe	
	ZNS-MCWH	✓	✓	Horn/Strobe	
	ZNS-24MCC	✓	✓	Horn/Strobe	
	ZNS-24MCCH	✓	✓	Horn/Strobe	
	RSS-121575W			✓	Strobe
	RSS-241575W			✓	Strobe
	RSS-24MCC			✓	Strobe
	RSS-24MCCR			✓	Strobe
	RSS-24MCCH			✓	Strobe
	RSS-24MCCHR			✓	Strobe
	RSS-24MCW			✓	Strobe
	RSS-24MCWH			✓	Strobe
	RSSP-121575W			✓	Strobe
	RSSP-241575W			✓	Strobe
	RSSR-2415W			✓	Strobe
	RSSR-2415C			✓	Strobe
	RSSR-2475W			✓	Strobe
	RSSR-2475C			✓	Strobe
	RSSR-24110C			✓	Strobe
	RSSA-24110W			✓	Strobe
	RSSB-24110W			✓	Strobe
	RSSG-24110W			✓	Strobe
	RSSR-24110W			✓	Strobe
	RSSA-24MCC			✓	Multi-Cd Strobe
	RSSB-24MCC			✓	Multi-Cd Strobe
	RSSG-24MCC			✓	Multi-Cd Strobe
	RSSR-24MCC			✓	Multi-Cd Strobe
	RSSWPA-2475W			✓	Strobe Weatherproof

Table A-1: Compatible Notification Appliances

Manufacturer	Model	Audio	Visual	Type
Wheelock Con't	RSSWPA-24MCCH		✓	Strobe Weatherproof
	RSSWPG-24MCCH		✓	Strobe Weatherproof
	RSSWPR-24MCCH		✓	Strobe Weatherproof
	RSSWP-2475W		✓	Strobe Weatherproof
	RSSWP-2475C		✓	Strobe Weatherproof
	RSSWP-24MCWH		✓	Strobe Weatherproof
	ZRS-MCWH		✓	Strobe
	ZRS-24MCC		✓	Strobe
	ZRS-24MCCH		✓	Strobe
	MB-G6-24			Motor Bell
	MB-G10-24			Motor Bell
	MB-G6-12			Motor Bell
	MB-G10-12			Motor Bell
	MIZ-24-R			Mini-Horn
	MT-12/24-R	✓	✓	Multitone Horn
	MT4-12/24	✓	✓	Multitone Horn
	ZRS-MCW		✓	Strobe
	MTWPR-24MCCH	✓	✓	Multitone Horn Strobe
	NH-12/24R	✓		Horn

Door Holder Device

The following UL listed door holder can be used with the 5496: ESL DHS-1224

Silent Knight Fire Product Warranty and Return Policy

General Terms and Conditions

- All new fire products manufactured by Silent Knight have a limited warranty period of 36 months from the date of manufacture against defects in materials and workmanship. See limited warranty statement for details.
- This limited warranty does not apply to those products that are damaged due to misuse, abuse, negligence, exposure to adverse environmental conditions, or have been modified in any manner whatsoever.

Repair and RA Procedure

- All products that are returned to Silent Knight for credit or repair require a RMA (Return Authorization) number. Call Silent Knight Customer Service at 800-328-0103 or 203-484-7161 between 8:00 A.M. and 5:00 P.M. EST, Monday through Friday to obtain a return authorization number.
- Silent Knight Technical Support is available at 800-446-6444 between 8:00 A.M. and 5:00 P.M. CST, Monday through Friday.
- All returns for credit are subject to inspection and testing at the factory before actual determination is made to allow credit.
- RMA number must be prominently displayed on the outside of the shipping box. See return address example under Advanced Replacement Policy.
- Include a packing slip that has the RMA number, a content list, and a detailed description of the problem should be included with each return.
- All products returned to Silent Knight must be sent freight pre-paid. After product is processed, Silent Knight will pay for shipping product back to customer via UPS ground.
- Return the Silent Knight product circuit board only. Products that are returned in cabinets will be charged an additional \$50 to cover the extra shipping and handling costs over board only returns. **Do not return batteries.** Silent Knight has the authority to determine if a product is repairable. Products that are deemed un-repairable will be returned to the customer.
- Product that is returned that has a board date code more than 36 months from date of manufacture will be repaired and the customer will be assessed the standard Silent Knight repair charge for that model.

Advanced Replacement Policy

- Silent Knight offers an option of advance replacement for fire product printed circuit boards that fail during the first 6 months of the warranty period. These items must be returned with transportation charges prepaid and must be accompanied by a return authorization.
- For advance replacement of a defective board contact your local Silent Knight Distributor or call Silent Knight at 203-484-7161 to obtain a RMA (Return Authorization) number and request advanced replacement,
- A new or refurbished board will be shipped to the customer. The customer will initially be billed for the replacement board but a credit will be issued after the repairable board is received at Silent Knight. All returned products must comply with the guidelines described under “General Terms and Conditions”.
- The defective board must be returned within 30 days of shipment of replacement board for customer to receive credit. No credit will be issued if the returned board was damaged due to misuse or abuse.
- Repairs and returns should be sent to:
Silent Knight / Honeywell
Attn: Repair Department
12 Clintonville Road
Northford, CT 06472
USA

RMA Number: _____

Limited Warranty

SILENT KNIGHT warrants products manufactured by it to be free from defects in materials and workmanship for thirty-six (36) months from the date of manufacture, under normal use and service. Products are date stamped at time of manufacture. The sole and exclusive obligation of SILENT KNIGHT is to repair or replace, at its option, free of charge for parts and labor, any part that is defective in materials or workmanship under normal use and service. **All returns for credit are subject to inspection and testing at the factory before actual determination is made to allow credit.** SILENT KNIGHT does not warrant products not manufactured by it, but assigns to the purchaser any warranty extended by the manufacturer of such products. This warranty is void if the product is altered or repaired by anyone other than SILENT KNIGHT or as expressly authorized by SILENT KNIGHT in writing, or is serviced by anyone other than SILENT KNIGHT or its authorized distributors. This warranty is also void if there is a failure to maintain the products and systems in which they operate in a proper and workable manner. In case of defect, secure a Return Material Authorization form from our Return Authorization Department.

This writing constitutes the only warranty made by SILENT KNIGHT, with respect to its products. SILENT KNIGHT, does not represent that its products will prevent any loss by fire or otherwise, or that its products will in all cases provide the protection for which they are installed or intended. Buyer acknowledges that SILENT KNIGHT is not an insurer and assumes no risk for loss or damages or the cost of any inconvenience, transportation damage, misuse, abuse, accident or similar incident.

SILENT KNIGHT GIVES NO WARRANTY, EXPRESS OR IMPLIED, OF MERCHANTABILITY, FITNESS FOR ANY PARTICULAR PURPOSE, OR OTHERWISE WHICH EXTENDS BEYOND THE DESCRIPTION ON THE FACE HEREOF. UNDER NO CIRCUMSTANCES SHALL SILENT KNIGHT BE LIABLE FOR ANY LOSS OF OR DAMAGE TO PROPERTY, DIRECT, INCIDENTAL OR CONSEQUENTIAL, ARISING OUT OF THE USE OF, OR INABILITY TO USE SILENT KNIGHT ALARM'S PRODUCTS. FURTHERMORE, SILENT KNIGHT SHALL NOT BE LIABLE FOR ANY PERSONAL INJURY OR DEATH WHICH MAY ARISE IN THE COURSE OF, OR AS A RESULT OF, PERSONAL, COMMERCIAL OR INDUSTRIAL USE OF ITS PRODUCTS

This warranty replaces all previous warranties and is the only warranty made by SILENT KNIGHT. No increase or alteration, written or verbal, of the obligation of this warranty is authorized.

“SILENT KNIGHT” is a registered trademark.



**SILENT
KNIGHT**

by Honeywell

12 Clintonville Road
Northford, CT 06472-1610 USA
203-484-7161
Fax 203-484-7118
www.silentknight.com

© 2009 Honeywell International Inc.